



GALA320-CYC210

Wall Sconce

General information

Colour	Anthracite / Black
Material	Aluminium
Glass type	Safety Glass
Width	80 mm
Height	210 mm
Depth	120 mm
Weight	1.2 kg

General information

Type of lamp	LED
Connected wattage	7.0 W
Supply voltage	220 - 240 V
AC / DC	Yes
Mains frequency	0 - 50 / 60 Hz
Safety Class	IP65
Controllable	On / Off



GALA330-KCA330

Garden Spot Light

General information

Colour	Anthracite / Black
Material	Aluminium
Glass type	Safety Glass
Width	80 mm
Height	330 mm
Depth	145 mm
Weight	0,53 kg

General information

Type of lamp	LED
Connected wattage	7.0 W
Supply voltage	220 - 240 V
AC / DC	Yes
Mains frequency	0 - 50 / 60 Hz
Safety Class	IP65
Controllable	On / Off

Lighting technology

Colour temperature options **3000K / 4000K / 6500K**

Luminaire luminous flux **260 lm**

Colour rendering index **80**

Adjustability **fixed**

Light distribution **-**

Bug rating **1-1-1**

CEN Flux Code **-**

Safety

Protection class **IP 65**

Impact resistance **-**

Max. ambient temperature **60°**

CE **✓**



● 3000 K (Warm)



● 4000 K (Neutral)



● 6500 K (Cool)



FONE | LIGHT
TECHNOLOGIES

GALA335-KCA280
Garden Spot Light



General information

Colour	Anthracite / Black
Material	Aluminium
Glass type	Safety Glass
Width	80 mm
Height	280 mm
Depth	145 mm
Weight	0,36 kg

General information

Type of lamp	LED
Connected wattage	7.0 W
Supply voltage	220 - 240 V
AC / DC	Yes
Mains frequency	0 - 50 / 60 Hz
Safety Class	IP65
Controllable	On / Off

Lighting technology

Colour temperature options **3000K / 4000K / 6500K**

Luminaire luminous flux **260 lm**

Colour rendering index **80**

Adjustability **fixed**

Light distribution **-**

Bug rating **1-1-1**

CEN Flux Code **-**

Safety

Protection class **IP 65**

Impact resistance **-**

Max. ambient temperature **60°**

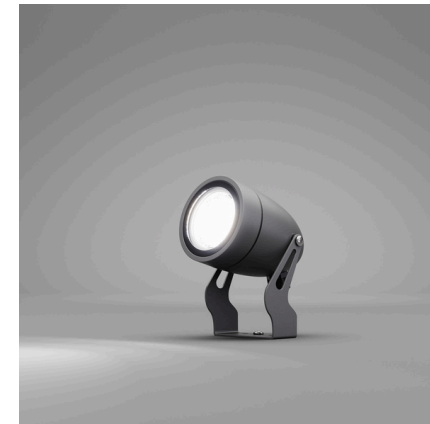
CE **✓**



● 3000 K (Warm)



● 4000 K (Neutral)



● 6500 K (Cool)



FONE | LIGHT
TECHNOLOGIES

Lighting technology

Colour temperature options **3000K / 4000K / 6500K**

Luminaire luminous flux **260 lm**

Colour rendering index **80**

Adjustability **fixed**

Light distribution **-**

Bug rating **1-1-1**

CEN Flux Code **-**

Safety

Protection class **IP 65**

Impact resistance **-**

Max. ambient temperature **60°**

CE **✓**



● 3000 K (Warm)



● 4000 K (Neutral)



● 6500 K (Cool)



FONE | LIGHT
TECHNOLOGIES

GALA320-CYC125

FONE | LIGHT
TECHNOLOGIES

Wall Sconce

General information

Colour	Anthracite / Black
Material	Aluminium
Glass type	Safety Glass
Width	80 mm
Height	125 mm
Depth	120 mm
Weight	0.9 kg

General information

Type of lamp	LED
Connected wattage	7.0 W
Supply voltage	220 - 240 V
AC / DC	Yes
Mains frequency	0 - 50 / 60 Hz
Safety Class	IP65
Controllable	On / Off



FONE | LIGHT
TECHNOLOGIES

Lighting technology

Colour temperature options **3000K / 4000K / 6500K**

Luminaire luminous flux **260 lm**

Colour rendering index **80**

Adjustability **fixed**

Light distribution **-**

Bug rating **1-1-1**

CEN Flux Code **-**

Safety

Protection class **IP 65**

Impact resistance **-**

Max. ambient temperature **60°**

CE **✓**



● 3000 K (Warm)



● 4000 K (Neutral)



● 6500 K (Cool)



GALA320-CYC270

FONE | LIGHT
TECHNOLOGIES

Wall Sconce

General information

Colour	Anthracite / Black
Material	Aluminium
Glass type	Safety Glass
Width	80 mm
Height	270 mm
Depth	120 mm
Weight	1.2 kg

General information

Type of lamp	LED
Connected wattage	7.0 W
Supply voltage	220 - 240 V
AC / DC	Yes
Mains frequency	0 - 50 / 60 Hz
Safety Class	IP65
Controllable	On / Off



FONE | LIGHT
TECHNOLOGIES

Lighting technology

Colour temperature options **3000K / 4000K / 6500K**

Luminaire luminous flux **260 lm**

Colour rendering index **80**

Adjustability **fixed**

Light distribution **-**

Bug rating **1-1-1**

CEN Flux Code **-**

Safety

Protection class **IP 65**

Impact resistance **-**

Max. ambient temperature **60°**

CE **✓**



● 3000 K (Warm)



● 4000 K (Neutral)



● 6500 K (Cool)



FONE | LIGHT
TECHNOLOGIES



GALA320-TY110

Bollard

General information

Colour	Anthracite / Black
Material	Aluminium
Glass type	Safety Glass
Width	80 mm
Height	110 mm
Depth	120 mm
Weight	0.8 kg

Electrical data

Type of lamp	LED
Connected wattage	7.0 W
Supply voltage	220 - 240 V
AC / DC	Yes
Mains frequency	0 - 50 / 60 Hz
Safety Class	IP65
Controllable	On / Off

Lighting technology

Colour temperature options **3000K / 4000K / 6500K**

Luminaire luminous flux **140 lm**

Colour rendering index **80**

Adjustability **fixed**

Light distribution **-**

Bug rating **0-1-1**

CEN Flux Code **-**

Safety

Protection class **IP 65**

Impact resistance **-**

Max. ambient temperature **60°**

CE **✓**



● 3000 K (Warm)



● 4000 K (Neutral)



● 6500 K (Cool)





GALA320-TY180

Bollard

General information

Colour	Anthracite / Black
Material	Aluminium
Glass type	Safety Glass
Width	80 mm
Height	180 mm
Depth	120 mm
Weight	0.8 kg

Electrical data

Type of lamp	LED
Connected wattage	7.0 W
Supply voltage	220 - 240 V
AC / DC	Yes
Mains frequency	0 - 50 / 60 Hz
Safety Class	IP65
Controllable	On / Off

Lighting technology

Colour temperature options **3000K / 4000K / 6500K**

Luminaire luminous flux **140 lm**

Colour rendering index **80**

Adjustability **fixed**

Light distribution **-**

Bug rating **0-1-1**

CEN Flux Code **-**

Safety

Protection class **IP 65**

Impact resistance **-**

Max. ambient temperature **60°**

CE **✓**



● 3000 K (Warm)



● 4000 K (Neutral)



● 6500 K (Cool)





GALA320-CY180

Wall Sconce

General information

Colour	Anthracite / Black
Material	Aluminium
Glass type	Safety Glass
Width	80 mm
Height	180 mm
Depth	120 mm
Weight	1.2 kg

General information

Type of lamp	LED
Connected wattage	7.0 W
Supply voltage	220 - 240 V
AC / DC	Yes
Mains frequency	0 - 50 / 60 Hz
Safety Class	IP65
Controllable	On / Off

Lighting technology

Colour temperature options **3000K / 4000K / 6500K**

Luminaire luminous flux **260 lm**

Colour rendering index **80**

Adjustability **fixed**

Light distribution **-**

Bug rating **1-1-1**

CEN Flux Code **-**

Safety

Protection class **IP 65**

Impact resistance **-**

Max. ambient temperature **60°**

CE **✓**



● 3000 K (Warm)



● 4000 K (Neutral)



● 6500 K (Cool)



FONE | LIGHT
TECHNOLOGIES

GALA320-CY240



Wall Sconce



General information

Colour	Anthracite / Black
Material	Aluminium
Glass type	Safety Glass
Width	80 mm
Height	240 mm
Depth	120 mm
Weight	1.2 kg

General information

Type of lamp	LED
Connected wattage	7.0 W
Supply voltage	220 - 240 V
AC / DC	Yes
Mains frequency	0 - 50 / 60 Hz
Safety Class	IP65
Controllable	On / Off

Lighting technology

Colour temperature options **3000K / 4000K / 6500K**

Luminaire luminous flux **260 lm**

Colour rendering index **80**

Adjustability **fixed**

Light distribution **-**

Bug rating **1-1-1**

CEN Flux Code **-**

Safety

Protection class **IP 65**

Impact resistance **-**

Max. ambient temperature **60°**

CE **✓**



● 3000 K (Warm)



● 4000 K (Neutral)



● 6500 K (Cool)



FONE | LIGHT
TECHNOLOGIES

GALA340-CY170



Wall Sconce



General information

Colour	Anthracite
Material	Aluminium
Glass type	Safety Glass
Width	70 mm
Height	170 mm
Depth	90 mm
Weight	0.8 kg

General information

Type of lamp	LED
Connected wattage	7.0 W
Supply voltage	220 - 240 V
AC / DC	Yes
Mains frequency	0 - 50 / 60 Hz
Safety Class	IP65
Controllable	On / Off

Lighting technology

Colour temperature options **3000K / 4000K / 6500K**

Luminaire luminous flux **260 lm**

Colour rendering index **80**

Adjustability **fixed**

Light distribution **-**

Bug rating **1-1-1**

CEN Flux Code **-**

Safety

Protection class **IP 65**

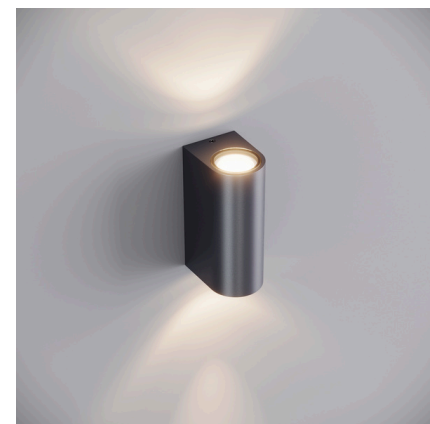
Impact resistance **-**

Max. ambient temperature **60°**

CE **✓**



● 3000 K (Warm)



● 4000 K (Neutral)



● 6500 K (Cool)



FONE LIGHT
TECHNOLOGIES



GALA350-CY170

Wall Sconce

General information

Colour	Anthracite
Material	Aluminium
Glass type	Safety Glass
Width	70 mm
Height	170 mm
Depth	90 mm
Weight	0.8 kg

General information

Type of lamp	LED
Connected wattage	7.0 W
Supply voltage	220 - 240 V
AC / DC	Yes
Mains frequency	0 - 50 / 60 Hz
Safety Class	IP65
Controllable	On / Off

Lighting technology

Colour temperature options **3000K / 4000K / 6500K**

Luminaire luminous flux **260 lm**

Colour rendering index **80**

Adjustability **fixed**

Light distribution **-**

Bug rating **1-1-1**

CEN Flux Code **-**

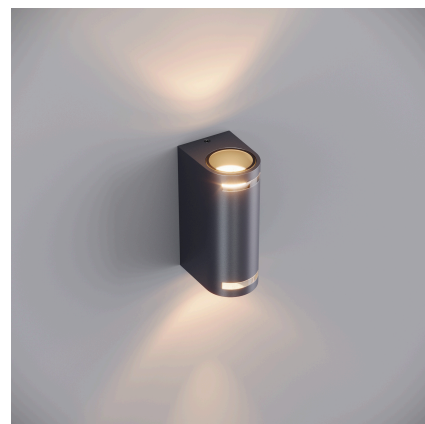
Safety

Protection class **IP 65**

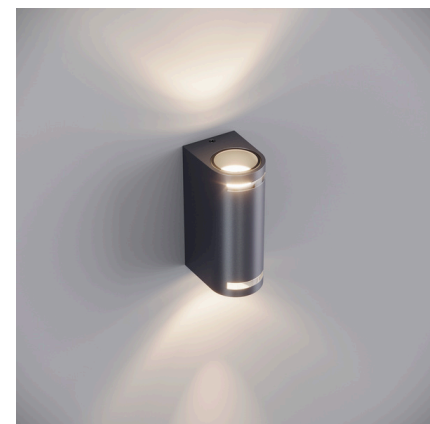
Impact resistance **-**

Max. ambient temperature **60°**

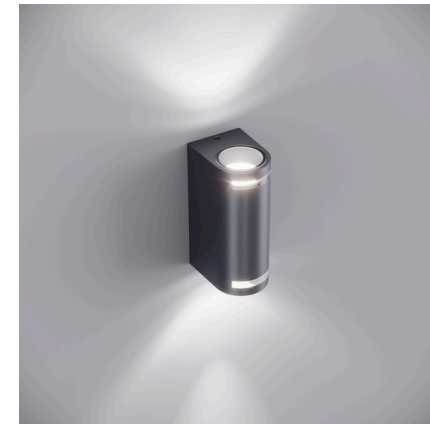
CE **✓**



● 3000 K (Warm)



● 4000 K (Neutral)



● 6500 K (Cool)



FONE | LIGHT
TECHNOLOGIES



GALA350-CY170

Wall Sconce

General information

Colour	Anthracite
Material	Aluminium
Glass type	Safety Glass
Width	70 mm
Height	170 mm
Depth	90 mm
Weight	0.8 kg

General information

Type of lamp	LED
Connected wattage	7.0 W
Supply voltage	220 - 240 V
AC / DC	Yes
Mains frequency	0 - 50 / 60 Hz
Safety Class	IP65
Controllable	On / Off

Lighting technology

Colour temperature options **3000K / 4000K / 6500K**

Luminaire luminous flux **260 lm**

Colour rendering index **80**

Adjustability **fixed**

Light distribution **-**

Bug rating **1-1-1**

CEN Flux Code **-**

Safety

Protection class **IP 65**

Impact resistance **-**

Max. ambient temperature **60°**

CE **✓**



● 3000 K (Warm)



● 4000 K (Neutral)



● 6500 K (Cool)



FONE | LIGHT
TECHNOLOGIES

GALA325-CY220 (Gold)

FONE | LIGHT
TECHNOLOGIES

Wall Sconce

General information

Colour	Gold / Anthracite
Material	Aluminium
Glass type	Safety Glass
Width	80 mm
Height	220 mm
Depth	100 mm
Weight	0.86 kg

General information

Type of lamp	LED
Connected wattage	14.0 W
Supply voltage	220 - 240 V
AC / DC	Yes
Mains frequency	0 - 50 / 60 Hz
Safety Class	IP65
Controllable	On / Off



FONE | LIGHT
TECHNOLOGIES

Lighting technology

Colour temperature options **3000K / 4000K / 6500K**

Luminaire luminous flux **1100 lm**

Colour rendering index **80**

Adjustability **fixed**

Light distribution **-**

Bug rating **1-1-1**

CEN Flux Code **-**

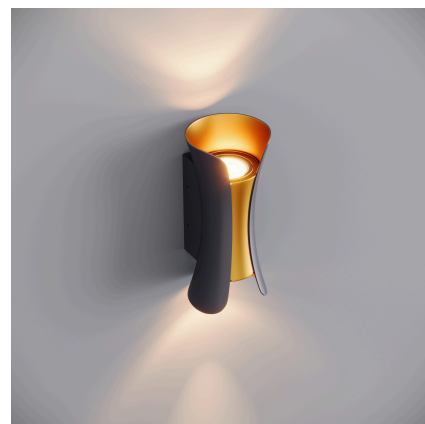
Safety

Protection class **IP 65**

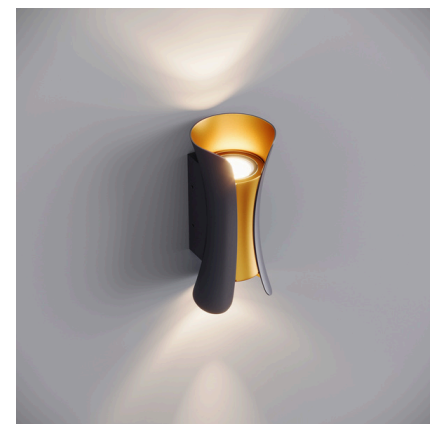
Impact resistance **-**

Max. ambient temperature **60°**

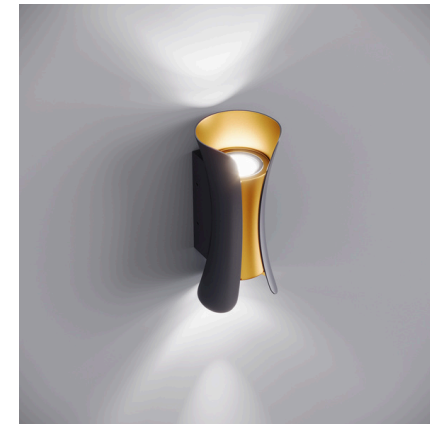
CE **✓**



● 3000 K (Warm)



● 4000 K (Neutral)



● 6500 K (Cool)



FONE LIGHT
TECHNOLOGIES

GALA325-CY220 (White)



Wall Sconce



General information

Colour	White
Material	Aluminium
Glass type	Safety Glass
Width	80 mm
Height	220 mm
Depth	100 mm
Weight	0.86 kg

General information

Type of lamp	LED
Connected wattage	14.0 W
Supply voltage	220 - 240 V
AC / DC	Yes
Mains frequency	0 - 50 / 60 Hz
Safety Class	IP65
Controllable	On / Off

Lighting technology

Colour temperature options **3000K / 4000K / 6500K**

Luminaire luminous flux **1100 lm**

Colour rendering index **80**

Adjustability **fixed**

Light distribution **-**

Bug rating **1-1-1**

CEN Flux Code **-**

Safety

Protection class **IP 65**

Impact resistance **-**

Max. ambient temperature **60°**

CE **✓**



● 3000 K (Warm)



● 4000 K (Neutral)



● 6500 K (Cool)

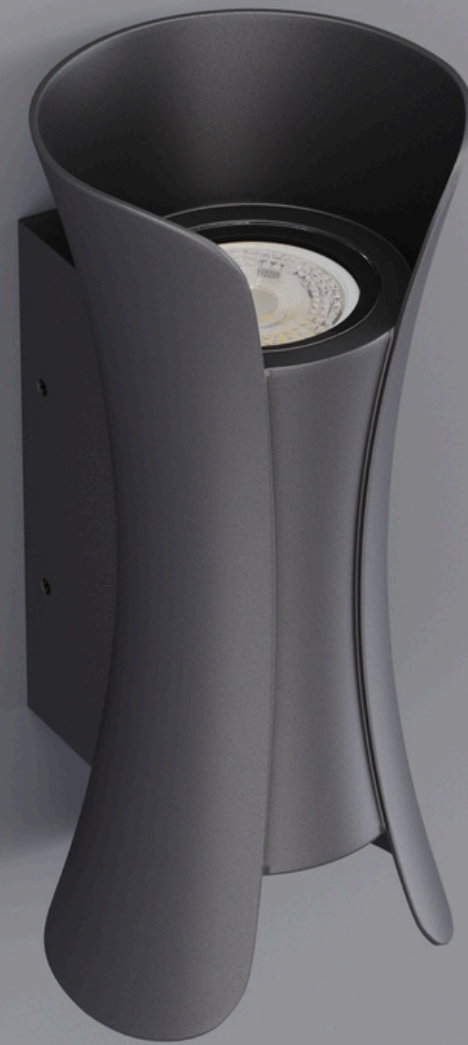


FONE LIGHT
TECHNOLOGIES

GALA325-CY220 (Anthracite)



Wall Sconce



General information

Colour	Anthracite
Material	Aluminium
Glass type	Safety Glass
Width	80 mm
Height	220 mm
Depth	100 mm
Weight	0.86 kg

General information

Type of lamp	LED
Connected wattage	14.0 W
Supply voltage	220 - 240 V
AC / DC	Yes
Mains frequency	0 - 50 / 60 Hz
Safety Class	IP65
Controllable	On / Off

Lighting technology

Colour temperature options **3000K / 4000K / 6500K**

Luminaire luminous flux **1100 lm**

Colour rendering index **80**

Adjustability **fixed**

Light distribution **-**

Bug rating **1-1-1**

CEN Flux Code **-**

Safety

Protection class **IP 65**

Impact resistance **-**

Max. ambient temperature **60°**

CE **✓**



● 3000 K (Warm)



● 4000 K (Neutral)



● 6500 K (Cool)



FONE LIGHT
TECHNOLOGIES

AKA010-APK35

FONE | LIGHT
TECHNOLOGIES

Wall Sconce

General information

Colour	Anthracite / Black
Material	Aluminium
Glass type	Safety Glass
Width	100 mm
Height	350 mm
Depth	100 mm
Weight	1.2 kg

General information

Type of lamp	LED
Connected wattage	7.0 W
Supply voltage	220 - 240 V
AC / DC	Yes
Mains frequency	0 - 50 / 60 Hz
Safety Class	IP65
Controllable	On / Off



FONE | LIGHT
TECHNOLOGIES

Lighting technology

Colour temperature options **3000K / 4000K / 6500K**

Luminaire luminous flux **260 lm**

Colour rendering index **80**

Adjustability **fixed**

Light distribution **-**

Bug rating **1-1-1**

CEN Flux Code **-**

Safety

Protection class **IP 65**

Impact resistance **-**

Max. ambient temperature **60°**

CE **✓**



● 3000 K (Warm)



● 4000 K (Neutral)



● 6500 K (Cool)





GALA340-SU240

Set-top Lighting

General information

Colour	Anthracite / Black
Material	Aluminium
Glass type	Safety Glass
Width	240 mm
Height	210 mm
Depth	240 mm
Weight	3 kg

General information

Type of lamp	LED
Connected wattage	9.0 W
Supply voltage	220 - 240 V
AC / DC	Yes
Mains frequency	0 - 50 / 60 Hz
Safety Class	IP65
Controllable	On / Off

Lighting technology

Colour temperature options **3000K / 4000K / 6500K**

Luminaire luminous flux **260 lm**

Colour rendering index **80**

Adjustability **fixed**

Light distribution **-**

Bug rating **1-1-1**

CEN Flux Code **-**

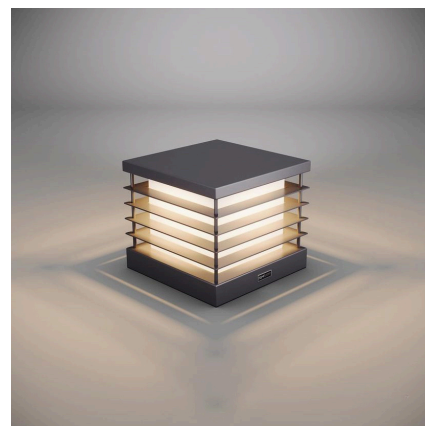
Safety

Protection class **IP 65**

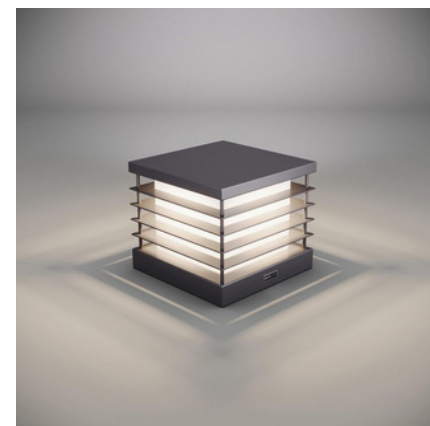
Impact resistance **-**

Max. ambient temperature **60°**

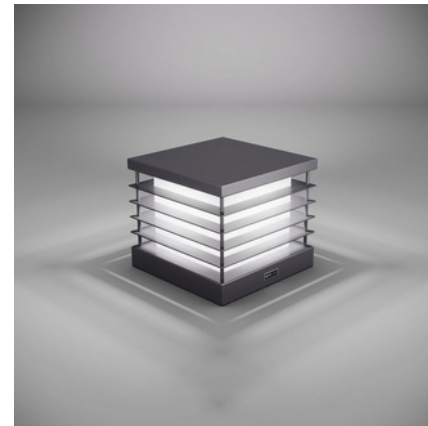
CE **✓**



● 3000 K (Warm)



● 4000 K (Neutral)



● 6500 K (Cool)



AKA020-APK35



Wall Sconce



General information

Colour	Anthracite / Black
Material	Aluminium
Glass type	Safety Glass
Width	100 mm
Height	350 mm
Depth	100 mm
Weight	1.2 kg

General information

Type of lamp	LED
Connected wattage	7.0 W
Supply voltage	220 - 240 V
AC / DC	Yes
Mains frequency	0 - 50 / 60 Hz
Safety Class	IP65
Controllable	On / Off

Lighting technology

Colour temperature options **3000K / 4000K / 6500K**

Luminaire luminous flux **260 lm**

Colour rendering index **80**

Adjustability **fixed**

Light distribution **-**

Bug rating **1-1-1**

CEN Flux Code **-**

Safety

Protection class **IP 65**

Impact resistance **-**

Max. ambient temperature **60°**

CE **✓**



● 3000 K (Warm)



● 4000 K (Neutral)



● 6500 K (Cool)

AKA040-APK35



Wall Sconce



General information

Colour	Anthracite / Black
Material	Aluminium
Glass type	Safety Glass
Width	100 mm
Height	350 mm
Depth	100 mm
Weight	1.2 kg

General information

Type of lamp	LED
Connected wattage	7.0 W
Supply voltage	220 - 240 V
AC / DC	Yes
Mains frequency	0 - 50 / 60 Hz
Safety Class	IP65
Controllable	On / Off

Lighting technology

Colour temperature options **3000K / 4000K / 6500K**

Luminaire luminous flux **260 lm**

Colour rendering index **80**

Adjustability **fixed**

Light distribution **-**

Bug rating **1-1-1**

CEN Flux Code **-**

Safety

Protection class **IP 65**

Impact resistance **-**

Max. ambient temperature **60°**

CE **✓**



● 3000 K (Warm)



● 4000 K (Neutral)



● 6500 K (Cool)

AKA050-APK35



Wall Sconce



General information

Colour	Anthracite / Black
Material	Aluminium
Glass type	Safety Glass
Width	100 mm
Height	350 mm
Depth	100 mm
Weight	1.2 kg

General information

Type of lamp	LED
Connected wattage	7.0 W
Supply voltage	220 - 240 V
AC / DC	Yes
Mains frequency	0 - 50 / 60 Hz
Safety Class	IP65
Controllable	On / Off

Lighting technology

Colour temperature options **3000K / 4000K / 6500K**

Luminaire luminous flux **260 lm**

Colour rendering index **80**

Adjustability **fixed**

Light distribution **-**

Bug rating **1-1-1**

CEN Flux Code **-**

Safety

Protection class **IP 65**

Impact resistance **-**

Max. ambient temperature **60°**

CE **✓**



● 3000 K (Warm)



● 4000 K (Neutral)



● 6500 K (Cool)

AKA060-APK35

FONE | LIGHT
TECHNOLOGIES

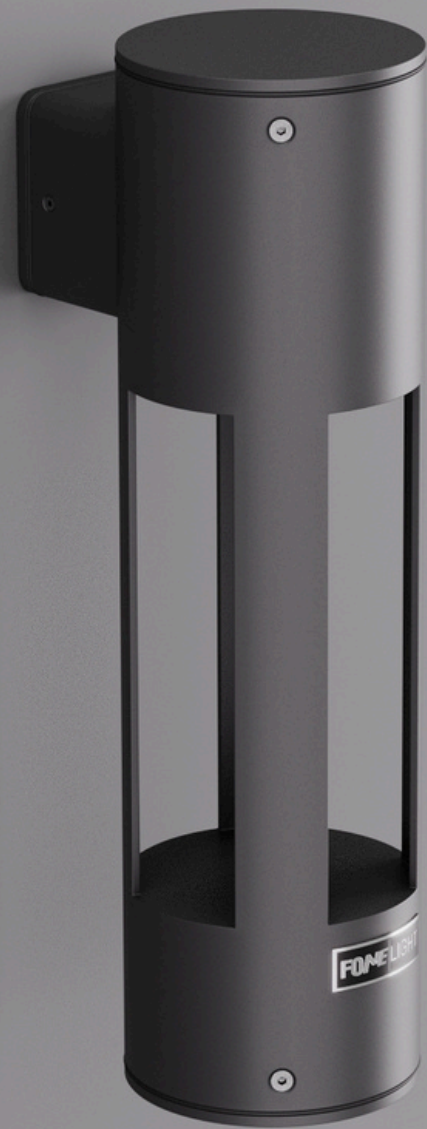
Wall Sconce

General information

Colour	Anthracite / Black
Material	Aluminium
Glass type	Safety Glass
Width	100 mm
Height	350 mm
Depth	100 mm
Weight	1.2 kg

General information

Type of lamp	LED
Connected wattage	7.0 W
Supply voltage	220 - 240 V
AC / DC	Yes
Mains frequency	0 - 50 / 60 Hz
Safety Class	IP65
Controllable	On / Off



FONE | LIGHT
TECHNOLOGIES

Lighting technology

Colour temperature options **3000K / 4000K / 6500K**

Luminaire luminous flux **260 lm**

Colour rendering index **80**

Adjustability **fixed**

Light distribution **-**

Bug rating **1-1-1**

CEN Flux Code **-**

Safety

Protection class **IP 65**

Impact resistance **-**

Max. ambient temperature **60°**

CE **✓**



● 3000 K (Warm)



● 4000 K (Neutral)



● 6500 K (Cool)



AKA010-CU75



Bollard



General information

Colour	Anthracite / Black
Material	Aluminium
Glass type	Safety Glass
Width	100 mm
Height	750 mm
Depth	100 mm
Weight	2.1 kg

Electrical data

Type of lamp	LED
Connected wattage	7.0 W
Supply voltage	220 - 240 V
AC / DC	Yes
Mains frequency	0 - 50 / 60 Hz
Safety Class	IP65
Controllable	On / Off

Lighting technology

Colour temperature options	3000K / 4000K / 6500K
Luminaire luminous flux	700 lm
Colour rendering index	80
Adjustability	fixed
Light distribution	-
Bug rating	1-1-1
CEN Flux Code	35-66-93-100-100

Safety

Protection class	IP 65
Impact resistance	-
Max. ambient temperature	60°
CE	✓



● 3000 K (Warm)



● 4000 K (Neutral)



● 6500 K (Cool)



FONE | LIGHT
TECHNOLOGIES

AKA010-CU100



Bollard



General information

Colour	Anthracite / Black
Material	Aluminium
Glass type	Safety Glass
Width	120 mm
Height	1000 mm
Depth	120 mm
Weight	2.4 kg

Electrical data

Type of lamp	LED
Connected wattage	7.0 W
Supply voltage	220 - 240 V
AC / DC	Yes
Mains frequency	0 - 50 / 60 Hz
Safety Class	IP65
Controllable	On / Off

Lighting technology

Colour temperature options	3000K / 4000K / 6500K
Luminaire luminous flux	700 lm
Colour rendering index	80
Adjustability	fixed
Light distribution	-
Bug rating	1-1-1
CEN Flux Code	35-66-93-100-100

Safety

Protection class	IP 65
Impact resistance	-
Max. ambient temperature	60°
CE	✓



● 3000 K (Warm)



● 4000 K (Neutral)



● 6500 K (Cool)



FONE | LIGHT
TECHNOLOGIES

AKA010-CU60



Bollard



General information

Colour	Anthracite / Black
Material	Aluminium
Glass type	Safety Glass
Width	100 mm
Height	600 mm
Depth	100 mm
Weight	1.7 kg

Electrical data

Type of lamp	LED
Connected wattage	7.0 W
Supply voltage	220 - 240 V
AC / DC	Yes
Mains frequency	0 - 50 / 60 Hz
Safety Class	IP65
Controllable	On / Off

Lighting technology

Colour temperature options	3000K / 4000K / 6500K
Luminaire luminous flux	600 lm
Colour rendering index	80
Adjustability	fixed
Light distribution	-
Bug rating	1-1-1
CEN Flux Code	35-66-93-100-100

Safety

Protection class	IP 65
Impact resistance	-
Max. ambient temperature	60°
CE	✓



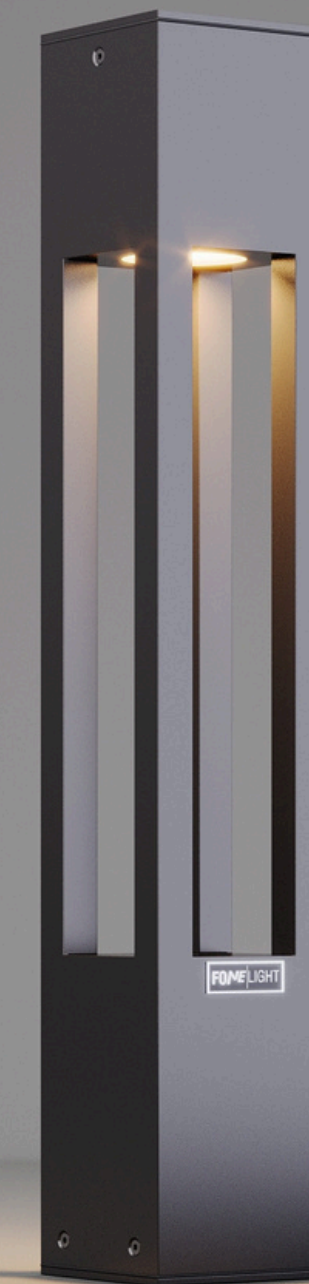
● 3000 K (Warm)



● 4000 K (Neutral)



● 6500 K (Cool)

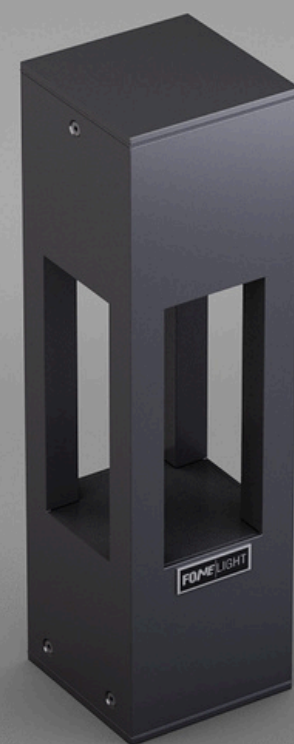


FONE | LIGHT
TECHNOLOGIES

AKA010-CU35



Bollard



General information

Colour	Anthracite / Black
Material	Aluminium
Glass type	Safety Glass
Width	100 mm
Height	350 mm
Depth	100 mm
Weight	0.8 kg

Electrical data

Type of lamp	LED
Connected wattage	7.0 W
Supply voltage	220 - 240 V
AC / DC	Yes
Mains frequency	0 - 50 / 60 Hz
Safety Class	IP65
Controllable	On / Off

Lighting technology

Colour temperature options	3000K / 4000K / 6500K
Luminaire luminous flux	400 lm
Colour rendering index	80
Adjustability	fixed
Light distribution	-
Bug rating	1-1-1
CEN Flux Code	35-66-93-100-100

Safety

Protection class	IP 65
Impact resistance	-
Max. ambient temperature	60°
CE	✓



● 3000 K (Warm)



● 4000 K (Neutral)



● 6500 K (Cool)



AKA020-CU75

FONE | LIGHT
TECHNOLOGIES

Bollard

General information

Colour	Anthracite / Black
Material	Aluminium
Glass type	Safety Glass
Width	100 mm
Height	750 mm
Depth	100 mm
Weight	2.1 kg

Electrical data

Type of lamp	LED
Connected wattage	7.0 W
Supply voltage	220 - 240 V
AC / DC	Yes
Mains frequency	0 - 50 / 60 Hz
Safety Class	IP65
Controllable	On / Off



FONE | LIGHT
TECHNOLOGIES

Lighting technology

Colour temperature options	3000K / 4000K / 6500K
Luminaire luminous flux	640 lm
Colour rendering index	80
Adjustability	fixed
Light distribution	-
Bug rating	0-1-1
CEN Flux Code	5-36-76-97-100-1-4-23-3

Safety

Protection class	IP 65
Impact resistance	-
Max. ambient temperature	60°
CE	✓



● 3000 K (Warm)



● 4000 K (Neutral)



● 6500 K (Cool)



FONE | LIGHT
TECHNOLOGIES

AKA020-DR100



Bollard

General information

Colour	Anthracite / Black
Material	Aluminium
Glass type	Safety Glass
Width	120 mm
Height	1000 mm
Depth	120 mm
Weight	3.7 kg

Electrical data

Type of lamp	LED
Connected wattage	24 W
Supply voltage	220 - 240 V
AC / DC	Yes
Mains frequency	0 - 50 / 60 Hz
Safety Class	IP65
Controllable	On / Off



Lighting technology

Colour temperature options	3000K / 4000K / 6500K
Luminaire luminous flux	1200 lm
Colour rendering index	80
Adjustability	fixed
Light distribution	-
Bug rating	0-0*-1
CEN Flux Code	23-61-91-100-100

Safety

Protection class	IP 65
Impact resistance	-
Max. ambient temperature	60°
CE	✓



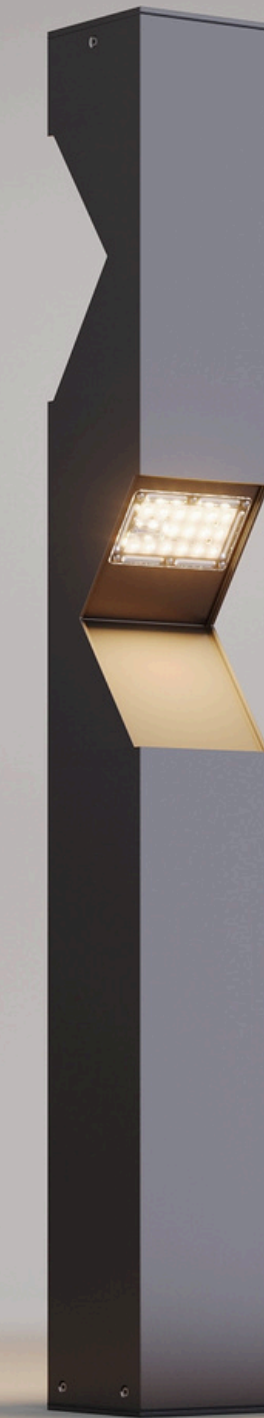
● 3000 K (Warm)



● 4000 K (Neutral)



● 6500 K (Cool)



FONE | LIGHT
TECHNOLOGIES

AKA030-CU75



Bollard



General information

Colour	Anthracite / Black
Material	Aluminium
Glass type	Safety Glass
Width	100 mm
Height	750 mm
Depth	100 mm
Weight	2.6 kg

Electrical data

Type of lamp	LED
Connected wattage	7.0 W
Supply voltage	220 - 240 V
AC / DC	Yes
Mains frequency	0 - 50 / 60 Hz
Safety Class	IP65
Controllable	On / Off

Lighting technology

Colour temperature options	3000K / 4000K / 6500K
Luminaire luminous flux	510 lm
Colour rendering index	80
Adjustability	fixed
Light distribution	-
Bug rating	0-1-1
CEN Flux Code	35-66-93-100-100

Safety

Protection class	IP 65
Impact resistance	-
Max. ambient temperature	60°
CE	✓



● 3000 K (Warm)



● 4000 K (Neutral)



● 6500 K (Cool)

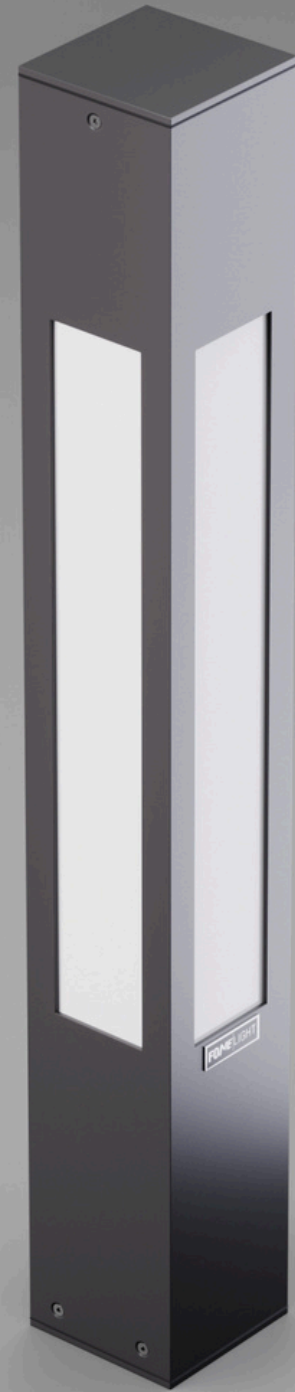


FONE | LIGHT
TECHNOLOGIES

AKA030-CU100



Bollard



General information

Colour	Anthracite / Black
Material	Aluminium
Glass type	Safety Glass
Width	120 mm
Height	1000 mm
Depth	120 mm
Weight	2.9 kg

Electrical data

Type of lamp	LED
Connected wattage	7.0 W
Supply voltage	220 - 240 V
AC / DC	Yes
Mains frequency	0 - 50 / 60 Hz
Safety Class	IP65
Controllable	On / Off

Lighting technology

Colour temperature options	3000K / 4000K / 6500K
Luminaire luminous flux	590 lm
Colour rendering index	80
Adjustability	fixed
Light distribution	-
Bug rating	0-1-1
CEN Flux Code	35-66-93-100-100

Safety

Protection class	IP 65
Impact resistance	-
Max. ambient temperature	60°
CE	✓



● 3000 K (Warm)



● 4000 K (Neutral)



● 6500 K (Cool)



FONE | LIGHT
TECHNOLOGIES

AKA030-CU35



Bollard

General information

Colour	Anthracite / Black
Material	Aluminium
Glass type	Safety Glass
Width	100 mm
Height	350 mm
Depth	100 mm
Weight	0.9 kg

Electrical data

Type of lamp	LED
Connected wattage	7.0 W
Supply voltage	220 - 240 V
AC / DC	Yes
Mains frequency	0 - 50 / 60 Hz
Safety Class	IP65
Controllable	On / Off



Lighting technology

Colour temperature options	3000K / 4000K / 6500K
Luminaire luminous flux	240 lm
Colour rendering index	80
Adjustability	fixed
Light distribution	-
Bug rating	0-1-1
CEN Flux Code	35-66-93-100-100

Safety

Protection class	IP 65
Impact resistance	-
Max. ambient temperature	60°
CE	✓



● 3000 K (Warm)



● 4000 K (Neutral)



● 6500 K (Cool)



FONE | LIGHT
TECHNOLOGIES

AKA020-CU35



Bollard



General information

Colour	Anthracite / Black
Material	Aluminium
Glass type	Safety Glass
Width	100 mm
Height	350 mm
Depth	100 mm
Weight	0,9 kg

Electrical data

Type of lamp	LED
Connected wattage	7.0 W
Supply voltage	220 - 240 V
AC / DC	Yes
Mains frequency	0 - 50 / 60 Hz
Safety Class	IP65
Controllable	On / Off

Lighting technology

Colour temperature options	3000K / 4000K / 6500K
Luminaire luminous flux	330 lm
Colour rendering index	80
Adjustability	fixed
Light distribution	-
Bug rating	0-1-1
CEN Flux Code	5-36-76-97-100-1-4-23-3

Safety

Protection class	IP 65
Impact resistance	-
Max. ambient temperature	60°
CE	✓



● 3000 K (Warm)



● 4000 K (Neutral)



● 6500 K (Cool)



FONE LIGHT

AKA040-CU35

FONE | LIGHT
TECHNOLOGIES

Bollard



General information

Colour	Anthracite / Black
Material	Aluminium
Glass type	Safety Glass
Width	100 mm
Height	350 mm
Depth	100 mm
Weight	0,9 kg

Electrical data

Type of lamp	LED
Connected wattage	7.0 W
Supply voltage	220 - 240 V
AC / DC	Yes
Mains frequency	0 - 50 / 60 Hz
Safety Class	IP65
Controllable	On / Off

FONE | LIGHT
TECHNOLOGIES

Lighting technology

Colour temperature options	3000K / 4000K / 6500K
Luminaire luminous flux	330 lm
Colour rendering index	80
Adjustability	fixed
Light distribution	-
Bug rating	0-1-1
CEN Flux Code	5-36-76-97-100-1-4-23-3

Safety

Protection class	IP 65
Impact resistance	-
Max. ambient temperature	60°
CE	✓



● 3000 K (Warm)



● 4000 K (Neutral)



● 6500 K (Cool)



FONE LIGHT
TECHNOLOGIES

AKA040-CU75

FONE | LIGHT
TECHNOLOGIES

Bollard

General information

Colour	Anthracite / Black
Material	Aluminium
Glass type	Safety Glass
Width	100 mm
Height	750 mm
Depth	100 mm
Weight	2.1

Electrical data

Type of lamp	LED
Connected wattage	7.0 W
Supply voltage	220 - 240 V
AC / DC	Yes
Mains frequency	0 - 50 / 60 Hz
Safety Class	IP65
Controllable	On / Off



FONE | LIGHT
TECHNOLOGIES

Lighting technology

Colour temperature options	3000K / 4000K / 6500K
Luminaire luminous flux	630 lm
Colour rendering index	80
Adjustability	fixed
Light distribution	-
Bug rating	0-1-1
CEN Flux Code	5-36-76-97-100-1-4-23-3

Safety

Protection class	IP 65
Impact resistance	-
Max. ambient temperature	60°
CE	✓



● 3000 K (Warm)



● 4000 K (Neutral)



● 6500 K (Cool)



FONE LIGHT
TECHNOLOGIES

AKA050-CU35

FONE | LIGHT
TECHNOLOGIES

Bollard



FONE | LIGHT
TECHNOLOGIES

General information

Colour	Anthracite / Black
Material	Aluminium
Glass type	Safety Glass
Width	100 mm
Height	350 mm
Depth	100 mm
Weight	0.9

Electrical data

Type of lamp	LED
Connected wattage	7.0 W
Supply voltage	220 - 240 V
AC / DC	Yes
Mains frequency	0 - 50 / 60 Hz
Safety Class	IP65
Controllable	On / Off

Lighting technology

Colour temperature options **3000K / 4000K / 6500K**

Luminaire luminous flux **310 lm**

Colour rendering index **80**

Adjustability **fixed**

Light distribution **-**

Bug rating **0-1-1**

CEN Flux Code **-**

Safety

Protection class **IP 65**

Impact resistance **-**

Max. ambient temperature **60°**

CE **✓**



● 3000 K (Warm)



● 4000 K (Neutral)



● 6500 K (Cool)



FONE LIGHT
TECHNOLOGIES



FONE | LIGHT
TECHNOLOGIES

AKA050-CU75

FONE | LIGHT
TECHNOLOGIES

Bollard

General information

Colour	Anthracite / Black
Material	Aluminium
Glass type	Safety Glass
Width	100 mm
Height	750 mm
Depth	100 mm
Weight	2.1

Electrical data

Type of lamp	LED
Connected wattage	7.0 W
Supply voltage	220 - 240 V
AC / DC	Yes
Mains frequency	0 - 50 / 60 Hz
Safety Class	IP65
Controllable	On / Off

Lighting technology

Colour temperature options **3000K / 4000K / 6500K**

Luminaire luminous flux **640 lm**

Colour rendering index **80**

Adjustability **fixed**

Light distribution **-**

Bug rating **0-1-1**

CEN Flux Code **-**

Safety

Protection class **IP 65**

Impact resistance **-**

Max. ambient temperature **60°**

CE **✓**



● 3000 K (Warm)



● 4000 K (Neutral)



● 6500 K (Cool)



FONE LIGHT
TECHNOLOGIES



AKA050-CU75

Bollard

General information

Colour	Anthracite / Black
Material	Aluminium
Glass type	Safety Glass
Width	100 mm
Height	750 mm
Depth	100 mm
Weight	2.1

Electrical data

Type of lamp	LED
Connected wattage	7.0 W
Supply voltage	220 - 240 V
AC / DC	Yes
Mains frequency	0 - 50 / 60 Hz
Safety Class	IP65
Controllable	On / Off

Lighting technology

Colour temperature options **3000K / 4000K / 6500K**

Luminaire luminous flux **640 lm**

Colour rendering index **80**

Adjustability **fixed**

Light distribution **-**

Bug rating **0-1-1**

CEN Flux Code **-**

Safety

Protection class **IP 65**

Impact resistance **-**

Max. ambient temperature **60°**

CE **✓**



● 3000 K (Warm)



● 4000 K (Neutral)



● 6500 K (Cool)



FONE LIGHT
TECHNOLOGIES

AKA010-DR100



Bollard

General information

Colour	Anthracite / Black
Material	Aluminium
Glass type	Safety Glass
Width	120 mm
Height	1000 mm
Depth	120 mm
Weight	3.6 kg

Electrical data

Type of lamp	LED
Connected wattage	12 W
Supply voltage	220 - 240 V
AC / DC	Yes
Mains frequency	0 - 50 / 60 Hz
Safety Class	IP65
Controllable	On / Off



Lighting technology

Colour temperature options	3000K / 4000K / 6500K
Luminaire luminous flux	610 lm
Colour rendering index	80
Adjustability	fixed
Light distribution	-
Bug rating	0-1-1
CEN Flux Code	35-66-93-100-100

Safety

Protection class	IP 65
Impact resistance	-
Max. ambient temperature	60°
CE	✓



● 3000 K (Warm)



● 4000 K (Neutral)



● 6500 K (Cool)

AKA010-DR200



Bollard

General information

Colour	Anthracite / Black
Material	Aluminium
Glass type	Safety Glass
Width	120 mm
Height	2000 mm
Depth	120 mm
Weight	7.7 kg

Electrical data

Type of lamp	LED
Connected wattage	30 W
Supply voltage	220 - 240 V
AC / DC	Yes
Mains frequency	0 - 50 / 60 Hz
Safety Class	IP65
Controllable	On / Off



Lighting technology

Colour temperature options	3000K / 4000K / 6500K
Luminaire luminous flux	2140 lm
Colour rendering index	80
Adjustability	fixed
Light distribution	-
Bug rating	0-1-1
CEN Flux Code	35-66-93-100-100

Safety

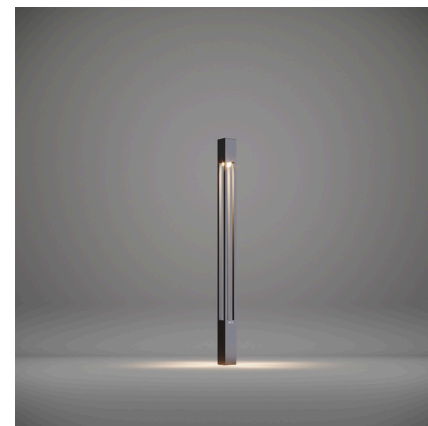
Protection class	IP 65
Impact resistance	-
Max. ambient temperature	60°
CE	✓



● 3000 K (Warm)



● 4000 K (Neutral)



● 6500 K (Cool)

AKA010-DR300

FONE | LIGHT
TECHNOLOGIES

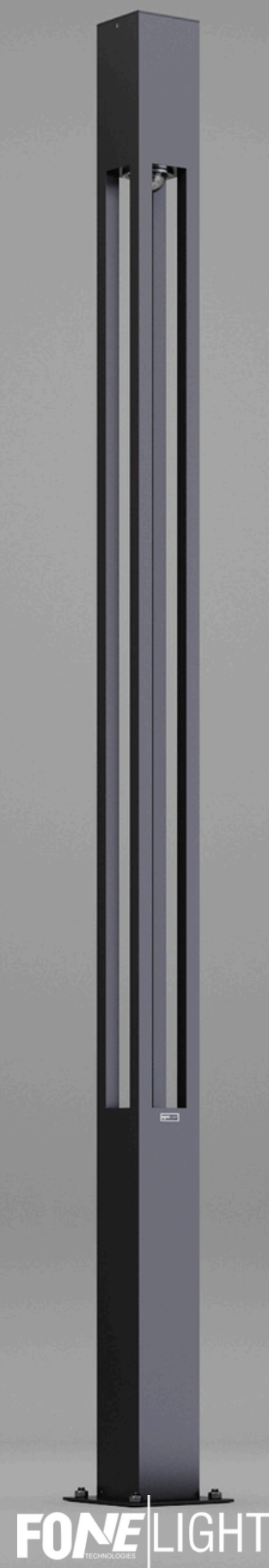
Bollard

General information

Colour	Anthracite / Black
Material	Aluminium
Glass type	Safety Glass
Width	150 mm
Height	3000 mm
Depth	150 mm
Weight	13.8 kg

Electrical data

Type of lamp	LED
Connected wattage	30 W
Supply voltage	220 - 240 V
AC / DC	Yes
Mains frequency	0 - 50 / 60 Hz
Safety Class	IP65
Controllable	On / Off



FONE | LIGHT
TECHNOLOGIES

Lighting technology

Colour temperature options	3000K / 4000K / 6500K
Luminaire luminous flux	2750 lm
Colour rendering index	80
Adjustability	fixed
Light distribution	-
Bug rating	0-1-1
CEN Flux Code	35-66-93-100-100

Safety

Protection class	IP 65
Impact resistance	-
Max. ambient temperature	60°
CE	✓



● 2700 K (Warm)

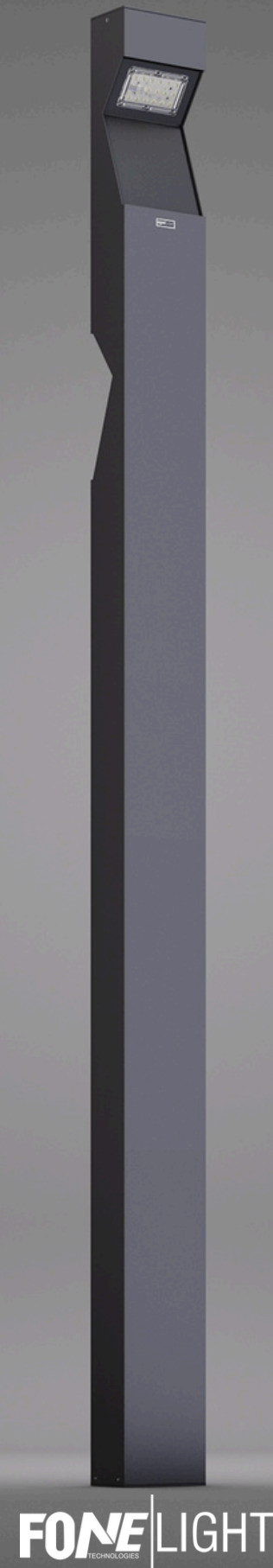


● 3000 K (Warm)



● 4000 K (Neutral)

FONE LIGHT
TECHNOLOGIES



AKA02
0-DR300
Bollard



General information

Colour	Anthracite / Black
Material	Aluminium
Glass type	Safety Glass
Width	150 mm
Height	3000 mm
Depth	150 mm
Weight	13.8 kg

Electrical data

Type of lamp	LED
Connected wattage	30 W
Supply voltage	220 - 240 V
AC / DC	Yes
Mains frequency	0 - 50 / 60 Hz
Safety Class	IP65
Controllable	On / Off

Lighting technology

Colour temperature options	3000K / 4000K / 6500K
Luminaire luminous flux	2750 lm
Colour rendering index	80
Adjustability	fixed
Light distribution	-
Bug rating	0-1-1
CEN Flux Code	35-66-93-100-100

Safety

Protection class	IP 65
Impact resistance	-
Max. ambient temperature	60°
CE	✓



● 2700 K (Warm)



● 3000 K (Warm)



● 4000 K (Neutral)



FONE LIGHT
TECHNOLOGIES

AKA020-DR200



Bollard

General information

Colour	Anthracite / Black
Material	Aluminium
Glass type	Safety Glass
Width	120 mm
Height	2000 mm
Depth	120 mm
Weight	13.8 kg

Electrical data

Type of lamp	LED
Connected wattage	30 W
Supply voltage	220 - 240 V
AC / DC	Yes
Mains frequency	0 - 50 / 60 Hz
Safety Class	IP65
Controllable	On / Off



Lighting technology

Colour temperature options	3000K / 4000K / 6500K
Luminaire luminous flux	2750 lm
Colour rendering index	80
Adjustability	fixed
Light distribution	-
Bug rating	0-1-1
CEN Flux Code	35-66-93-100-100

Safety

Protection class	IP 65
Impact resistance	-
Max. ambient temperature	60°
CE	✓



● 2700 K (Warm)



● 3000 K (Warm)



● 4000 K (Neutral)



AKA030-DR200



Bollard

General information

Colour	Anthracite / Black
Material	Aluminium
Glass type	Safety Glass
Width	120 mm
Height	2000 mm
Depth	120 mm
Weight	7.7 kg

Electrical data

Type of lamp	LED
Connected wattage	30 W
Supply voltage	220 - 240 V
AC / DC	Yes
Mains frequency	0 - 50 / 60 Hz
Safety Class	IP65
Controllable	On / Off



Lighting technology

Colour temperature options	3000K / 4000K / 6500K
Luminaire luminous flux	2140 lm
Colour rendering index	80
Adjustability	fixed
Light distribution	-
Bug rating	0-1-1
CEN Flux Code	35-66-93-100-100

Safety

Protection class	IP 65
Impact resistance	-
Max. ambient temperature	60°
CE	✓



● 3000 K (Warm)



● 4000 K (Neutral)



● 6500 K (Cool)



FONE | LIGHT
TECHNOLOGIES

AKA030-DR300



Bollard

General information

Colour	Anthracite / Black
Material	Aluminium
Glass type	Safety Glass
Width	150 mm
Height	3000 mm
Depth	150 mm
Weight	13.8 kg

Electrical data

Type of lamp	LED
Connected wattage	30 W
Supply voltage	220 - 240 V
AC / DC	Yes
Mains frequency	0 - 50 / 60 Hz
Safety Class	IP65
Controllable	On / Off



Lighting technology

Colour temperature options	3000K / 4000K / 6500K
Luminaire luminous flux	2750 lm
Colour rendering index	80
Adjustability	fixed
Light distribution	-
Bug rating	0-1-1
CEN Flux Code	35-66-93-100-100

Safety

Protection class	IP 65
Impact resistance	-
Max. ambient temperature	60°
CE	✓



● 2700 K (Warm)



● 3000 K (Warm)



● 4000 K (Neutral)

FONE LIGHT
TECHNOLOGIES

AKA040-DR200



Bollard

General information

Colour	Anthracite / Black
Material	Aluminium
Glass type	Safety Glass
Width	120 mm
Height	2000 mm
Depth	120 mm
Weight	7.7 kg

Electrical data

Type of lamp	LED
Connected wattage	30 W
Supply voltage	220 - 240 V
AC / DC	Yes
Mains frequency	0 - 50 / 60 Hz
Safety Class	IP65
Controllable	On / Off



Lighting technology

Colour temperature options	3000K / 4000K / 6500K
Luminaire luminous flux	2140 lm
Colour rendering index	80
Adjustability	fixed
Light distribution	-
Bug rating	0-1-1
CEN Flux Code	35-66-93-100-100

Safety

Protection class	IP 65
Impact resistance	-
Max. ambient temperature	60°
CE	✓



● 3000 K (Warm)



● 4000 K (Neutral)



● 6500 K (Cool)



FONE | LIGHT
TECHNOLOGIES



AKA040-DR300

FONE LIGHT
TECHNOLOGIES

Bollard

General information

Colour	Anthracite / Black
Material	Aluminium
Glass type	Safety Glass
Width	150 mm
Height	3000 mm
Depth	150 mm
Weight	13.8 kg

Electrical data

Type of lamp	LED
Connected wattage	30 W
Supply voltage	220 - 240 V
AC / DC	Yes
Mains frequency	0 - 50 / 60 Hz
Safety Class	IP65
Controllable	On / Off

Lighting technology

Colour temperature options	3000K / 4000K / 6500K
Luminaire luminous flux	2750 lm
Colour rendering index	80
Adjustability	fixed
Light distribution	-
Bug rating	0-1-1
CEN Flux Code	35-66-93-100-100

Safety

Protection class	IP 65
Impact resistance	-
Max. ambient temperature	60°
CE	✓



● 2700 K (Warm)



● 3000 K (Warm)



● 4000 K (Neutral)



FONE LIGHT
TECHNOLOGIES

AKA050-DR200



Bollard

General information

Colour	Anthracite / Black
Material	Aluminium
Glass type	Safety Glass
Width	120 mm
Height	2000 mm
Depth	120 mm
Weight	7.7 kg

Electrical data

Type of lamp	LED
Connected wattage	30 W
Supply voltage	220 - 240 V
AC / DC	Yes
Mains frequency	0 - 50 / 60 Hz
Safety Class	IP65
Controllable	On / Off



Lighting technology

Colour temperature options	3000K / 4000K / 6500K
Luminaire luminous flux	2140 lm
Colour rendering index	80
Adjustability	fixed
Light distribution	-
Bug rating	0-1-1
CEN Flux Code	35-66-93-100-100

Safety

Protection class	IP 65
Impact resistance	-
Max. ambient temperature	60°
CE	✓



● 3000 K (Warm)



● 4000 K (Neutral)



● 6500 K (Cool)

AKA050-DR300



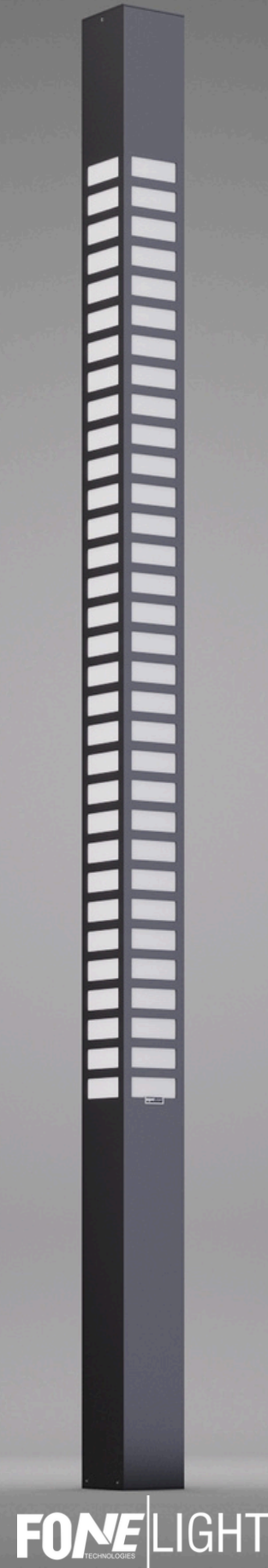
Bollard

General information

Colour	Anthracite / Black
Material	Aluminium
Glass type	Safety Glass
Width	150 mm
Height	3000 mm
Depth	150 mm
Weight	13.8 kg

Electrical data

Type of lamp	LED
Connected wattage	30 W
Supply voltage	220 - 240 V
AC / DC	Yes
Mains frequency	0 - 50 / 60 Hz
Safety Class	IP65
Controllable	On / Off



Lighting technology

Colour temperature options	3000K / 4000K / 6500K
Luminaire luminous flux	2750 lm
Colour rendering index	80
Adjustability	fixed
Light distribution	-
Bug rating	0-1-1
CEN Flux Code	35-66-93-100-100

Safety

Protection class	IP 65
Impact resistance	-
Max. ambient temperature	60°
CE	✓



● 2700 K (Warm)



● 3000 K (Warm)



● 4000 K (Neutral)

FONE LIGHT
TECHNOLOGIES

AKA060-DR200



Bollard

General information

Colour	Anthracite / Black
Material	Aluminium
Glass type	Safety Glass
Width	120 mm
Height	2000 mm
Depth	120 mm
Weight	7.7 kg

Electrical data

Type of lamp	LED
Connected wattage	30 W
Supply voltage	220 - 240 V
AC / DC	Yes
Mains frequency	0 - 50 / 60 Hz
Safety Class	IP65
Controllable	On / Off



Lighting technology

Colour temperature options	3000K / 4000K / 6500K
Luminaire luminous flux	2140 lm
Colour rendering index	80
Adjustability	fixed
Light distribution	-
Bug rating	0-1-1
CEN Flux Code	35-66-93-100-100

Safety

Protection class	IP 65
Impact resistance	-
Max. ambient temperature	60°
CE	✓



● 3000 K (Warm)



● 4000 K (Neutral)



● 6500 K (Cool)

AKA060-DR300



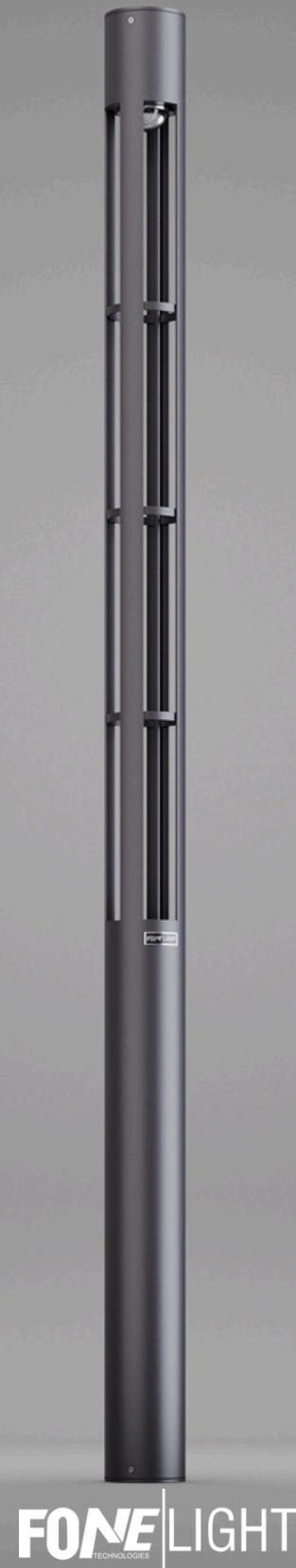
Bollard

General information

Colour	Anthracite / Black
Material	Aluminium
Glass type	Safety Glass
Width	150 mm
Height	3000 mm
Depth	150 mm
Weight	13.8 kg

Electrical data

Type of lamp	LED
Connected wattage	30 W
Supply voltage	220 - 240 V
AC / DC	Yes
Mains frequency	0 - 50 / 60 Hz
Safety Class	IP65
Controllable	On / Off



Lighting technology

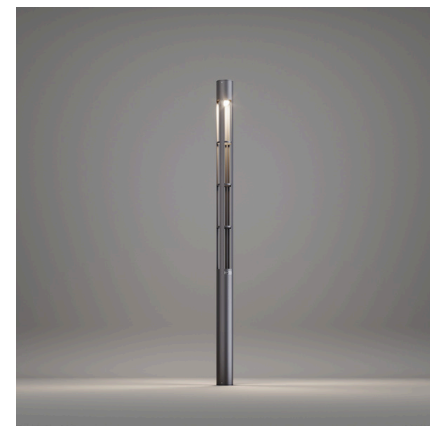
Colour temperature options	3000K / 4000K / 6500K
Luminaire luminous flux	2750 lm
Colour rendering index	80
Adjustability	fixed
Light distribution	-
Bug rating	0-1-1
CEN Flux Code	35-66-93-100-100

Safety

Protection class	IP 65
Impact resistance	-
Max. ambient temperature	60°
CE	✓



● 2700 K (Warm)



● 3000 K (Warm)



● 4000 K (Neutral)

FONE LIGHT
TECHNOLOGIES

AKA 120-CU50

FONE | LIGHT
TECHNOLOGIES

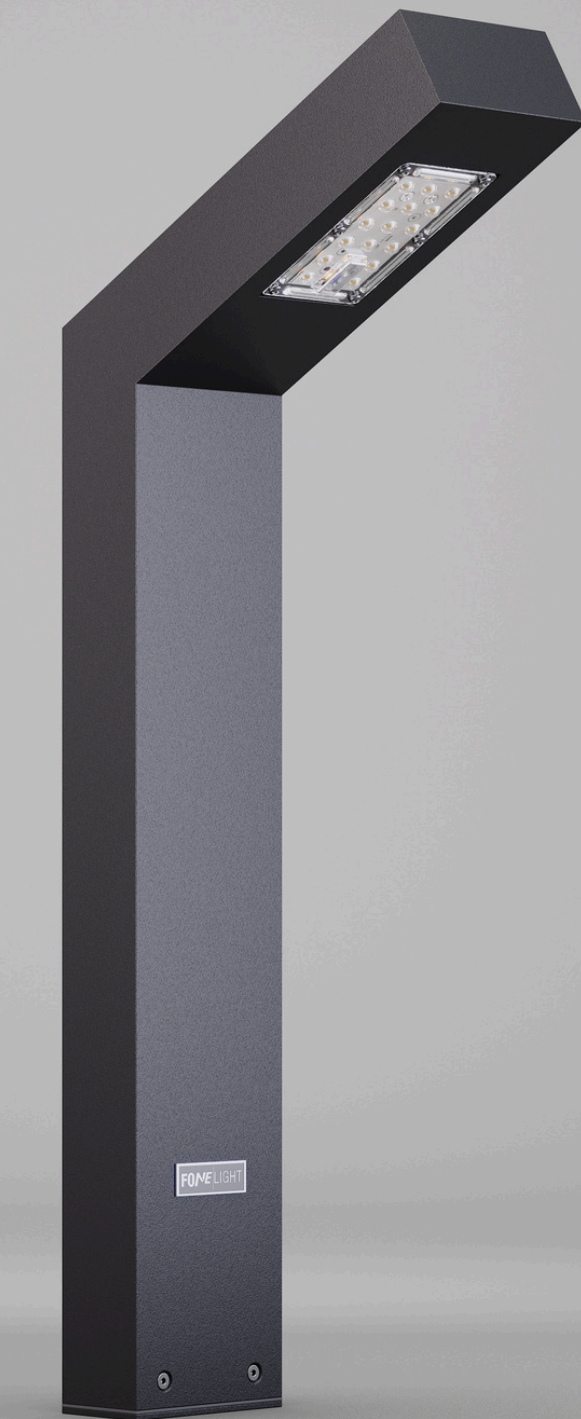
Bollard

General information

Colour	Anthracite / Black
Material	Aluminium
Glass type	Safety Glass
Width	95 mm
Height	500 mm
Depth	50 mm
Weight	1.2 kg

Electrical data

Type of lamp	LED
Connected wattage	18 W
Supply voltage	220 - 240 V
AC / DC	Yes
Mains frequency	0 - 50 / 60 Hz
Safety Class	IP65
Controllable	On / Off



FONE | LIGHT
TECHNOLOGIES

Lighting technology

Colour temperature options **3000K / 4000K / 6500K**

Luminaire luminous flux **1300 lm**

Colour rendering index **80**

Adjustability **fixed**

Light distribution **-**

Bug rating **0-1-1**

CEN Flux Code **35-66-93-100-100**

Safety

Protection class **IP 65**

Impact resistance **-**

Max. ambient temperature **60°**

CE **✓**



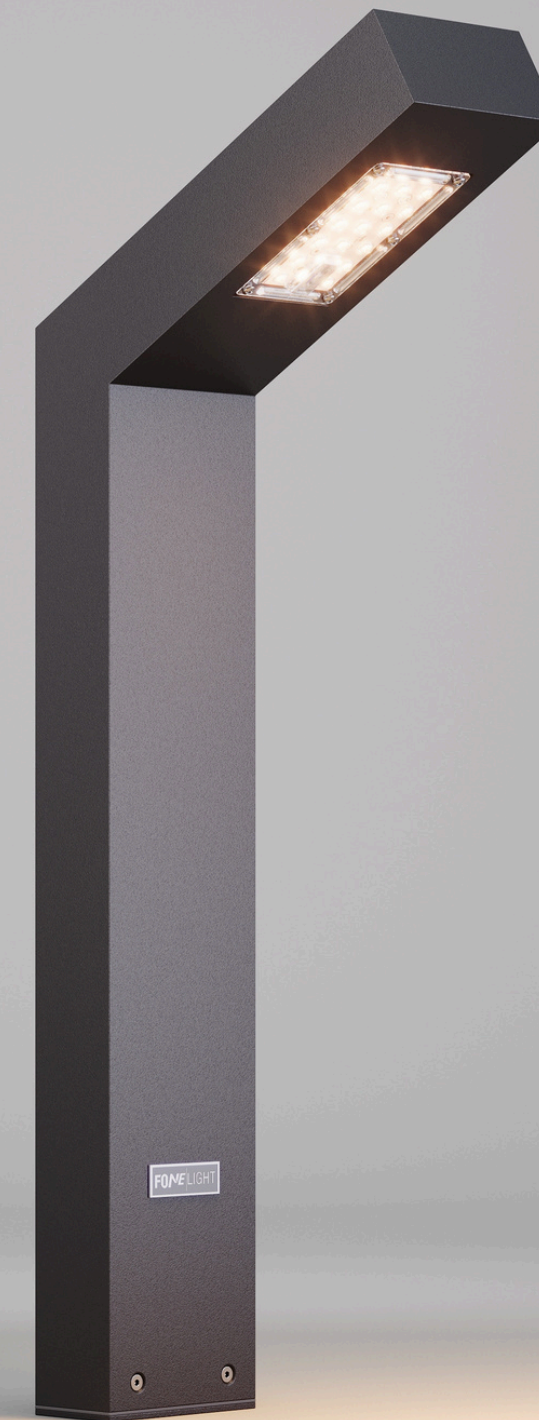
● 3000 K (Warm)



● 4000 K (Neutral)



● 6500 K (Cool)



FONE LIGHT
TECHNOLOGIES

AKA 120-DR80



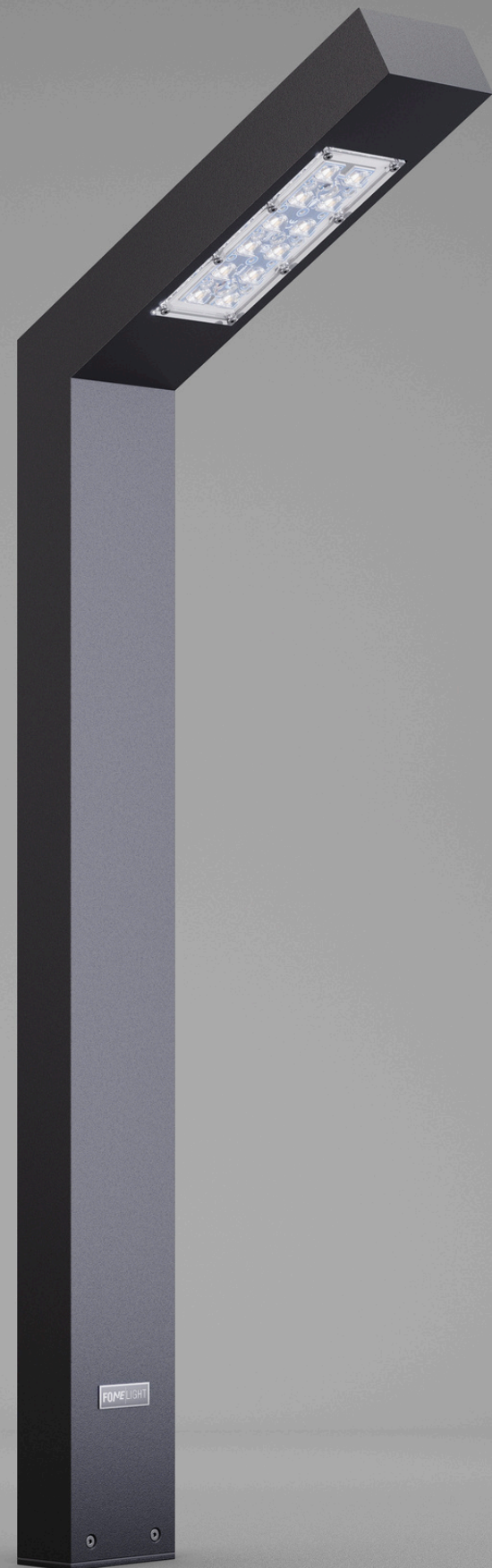
Bollard

General information

Colour	Anthracite / Black
Material	Aluminium
Glass type	Safety Glass
Width	95 mm
Height	800 mm
Depth	50 mm
Weight	1,9 kg

Electrical data

Type of lamp	LED
Connected wattage	18 W
Supply voltage	220 - 240 V
AC / DC	Yes
Mains frequency	0 - 50 / 60 Hz
Safety Class	IP65
Controllable	On / Off



Lighting technology

Colour temperature options	3000K / 4000K / 6500K
Luminaire luminous flux	1500 lm
Colour rendering index	80
Adjustability	fixed
Light distribution	-
Bug rating	0-1-1
CEN Flux Code	35-66-93-100-100

Safety

Protection class	IP 65
Impact resistance	-
Max. ambient temperature	60°
CE	✓



● 3000 K (Warm)



● 4000 K (Neutral)



● 6500 K (Cool)



FONE LIGHT
TECHNOLOGIES

AKA 120-DR100



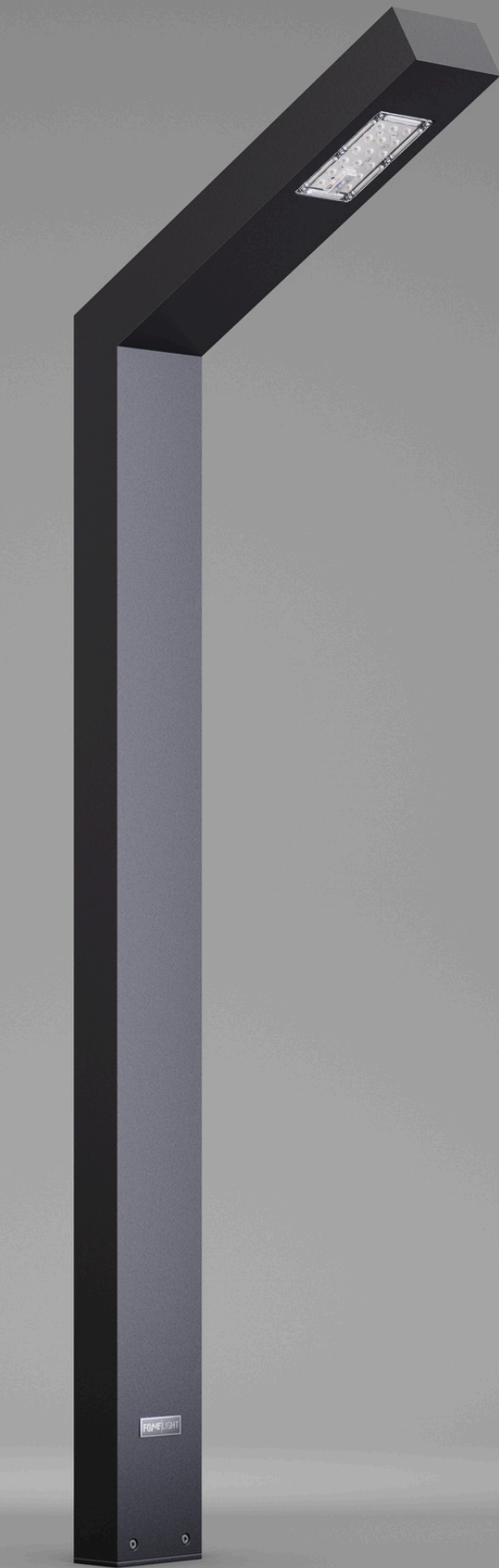
Bollard

General information

Colour	Anthracite / Black
Material	Aluminium
Glass type	Safety Glass
Width	95 mm
Height	1000 mm
Depth	50 mm
Weight	2,20 kg

Electrical data

Type of lamp	LED
Connected wattage	18 W
Supply voltage	220 - 240 V
AC / DC	Yes
Mains frequency	0 - 50 / 60 Hz
Safety Class	IP65
Controllable	On / Off



Lighting technology

Colour temperature options	3000K / 4000K / 6500K
Luminaire luminous flux	1700 lm
Colour rendering index	80
Adjustability	fixed
Light distribution	-
Bug rating	0-1-1
CEN Flux Code	35-66-93-100-100

Safety

Protection class	IP 65
Impact resistance	-
Max. ambient temperature	60°
CE	✓



● 3000 K (Warm)



● 4000 K (Neutral)



● 6500 K (Cool)



FONE LIGHT
TECHNOLOGIES

AKA 120-DR300

FONE | LIGHT
TECHNOLOGIES

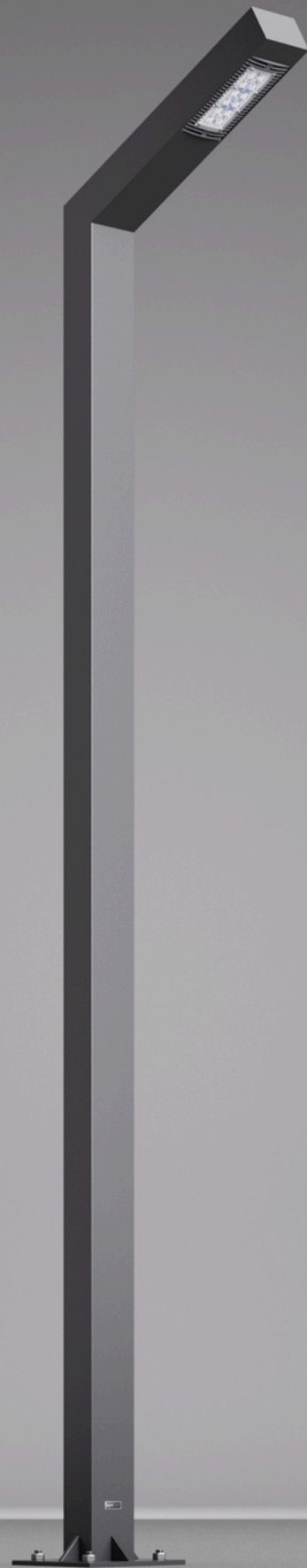
Bollard

General information

Colour	Anthracite / Black
Material	Aluminium
Glass type	Safety Glass
Width	120 mm
Height	3000 mm
Depth	60 mm
Weight	7,60 kg

Electrical data

Type of lamp	LED
Connected wattage	30 W
Supply voltage	220 - 240 V
AC / DC	Yes
Mains frequency	0 - 50 / 60 Hz
Safety Class	IP65
Controllable	On / Off



FONE | LIGHT
TECHNOLOGIES

Lighting technology

Colour temperature options	3000K / 4000K / 6500K
Luminaire luminous flux	3200 lm
Colour rendering index	80
Adjustability	fixed
Light distribution	-
Bug rating	0-1-1
CEN Flux Code	35-66-93-100-100

Safety

Protection class	IP 65
Impact resistance	-
Max. ambient temperature	60°
CE	✓



● 3000 K (Warm)



● 4000 K (Neutral)



● 6500 K (Cool)



FONE LIGHT
TECHNOLOGIES

AKA 120-DR400

FONE | LIGHT
TECHNOLOGIES

Bollard

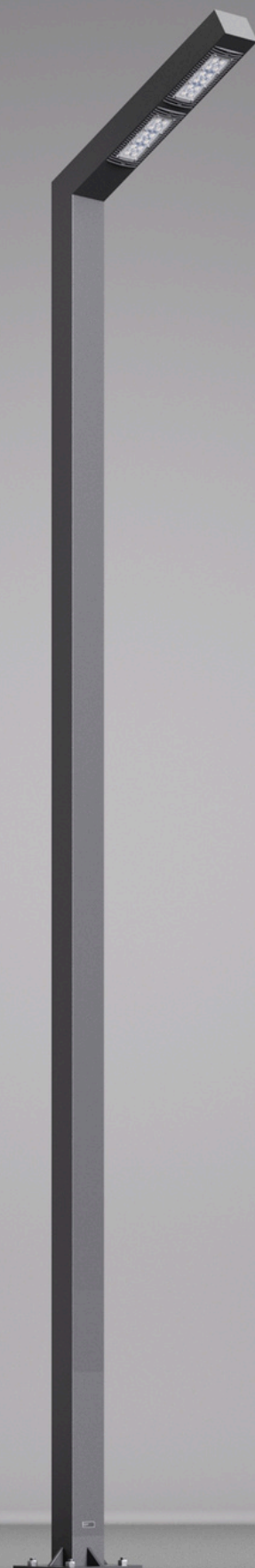
General information

Colour	Anthracite / Black
Material	Aluminium
Glass type	Safety Glass
Width	120 mm
Height	4000 mm
Depth	80 mm
Weight	9,20 kg

Electrical data

Type of lamp	LED
Connected wattage	2X 30 W
Supply voltage	220 - 240 V
AC / DC	Yes
Mains frequency	0 - 50 / 60 Hz
Safety Class	IP65
Controllable	On / Off

FONE | LIGHT
TECHNOLOGIES



Lighting technology

Colour temperature options	3000K / 4000K / 6500K
Luminaire luminous flux	6500 lm
Colour rendering index	80
Adjustability	fixed
Light distribution	-
Bug rating	0-1-1
CEN Flux Code	35-66-93-100-100

Safety

Protection class	IP 65
Impact resistance	-
Max. ambient temperature	60°
CE	✓



● 3000 K (Warm)



● 4000 K (Neutral)



● 6500 K (Cool)



FONE LIGHT
TECHNOLOGIES



AKA 120-DR500

Bollard

General information

Colour	Anthracite / Black
Material	Aluminium
Glass type	Safety Glass
Width	120 mm
Height	5000 mm
Depth	80 mm
Weight	12,30 kg

Electrical data

Type of lamp	LED
Connected wattage	2X 30 W
Supply voltage	220 - 240 V
AC / DC	Yes
Mains frequency	0 - 50 / 60 Hz
Safety Class	IP65
Controllable	On / Off

Lighting technology

Colour temperature options	3000K / 4000K / 6500K
Luminaire luminous flux	6900 lm
Colour rendering index	80
Adjustability	fixed
Light distribution	-
Bug rating	0-1-1
CEN Flux Code	35-66-93-100-100

Safety

Protection class	IP 65
Impact resistance	-
Max. ambient temperature	60°
CE	✓



● 3000 K (Warm)



● 4000 K (Neutral)



● 6500 K (Cool)



FONE LIGHT
TECHNOLOGIES