

GALA340-CY170

FONE | LIGHT
TECHNOLOGIES

Wall Sconce



FONE | LIGHT
TECHNOLOGIES

General information

Colour	Anthracite
Material	Aluminium
Glass type	Safety Glass
Width	70 mm
Height	170 mm
Depth	90 mm
Weight	0.8 kg

General information

Type of lamp	LED
Connected wattage	7.0 W
Supply voltage	220 - 240 V
AC / DC	Yes
Mains frequency	0 - 50 / 60 Hz
Safety Class	IP65
Controllable	On / Off

Lighting technology

Colour temperature options **3000K / 4000K / 6500K**

Luminaire luminous flux **260 lm**

Colour rendering index **80**

Adjustability **fixed**

Light distribution **-**

Bug rating **1-1-1**

CEN Flux Code **-**

Safety

Protection class **IP 65**

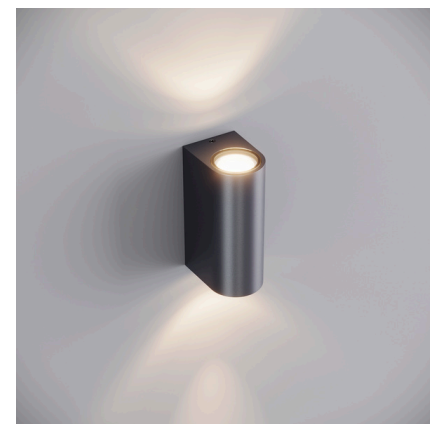
Impact resistance **-**

Max. ambient temperature **60°**

CE **✓**



● 3000 K (Warm)



● 4000 K (Neutral)



● 6500 K (Cool)



FONE LIGHT
TECHNOLOGIES