

AKA060-DR300

FONE LIGHT
TECHNOLOGIES

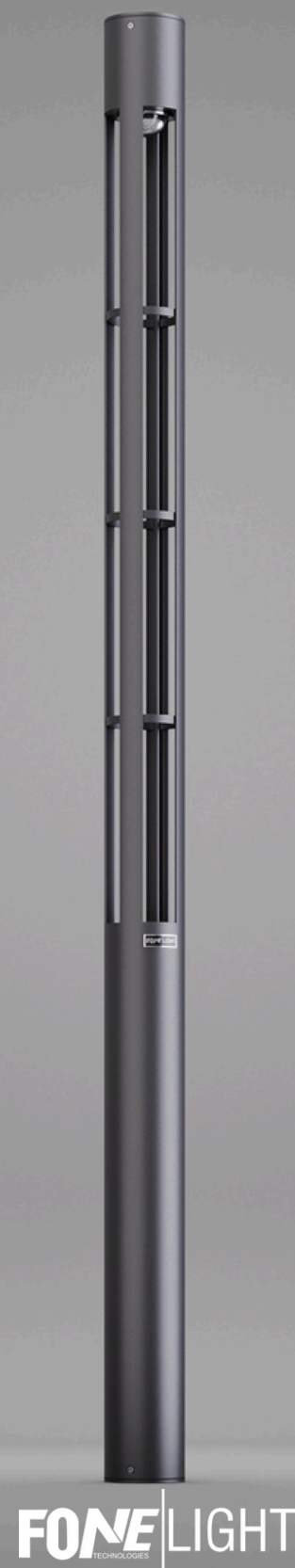
Bollard

General information

Colour	Anthracite / Black
Material	Aluminium
Glass type	Safety Glass
Width	150 mm
Height	3000 mm
Depth	150 mm
Weight	13.8 kg

Electrical data

Type of lamp	LED
Connected wattage	30 W
Supply voltage	220 - 240 V
AC / DC	Yes
Mains frequency	0 - 50 / 60 Hz
Safety Class	IP65
Controllable	On / Off



FONE LIGHT
TECHNOLOGIES

Lighting technology

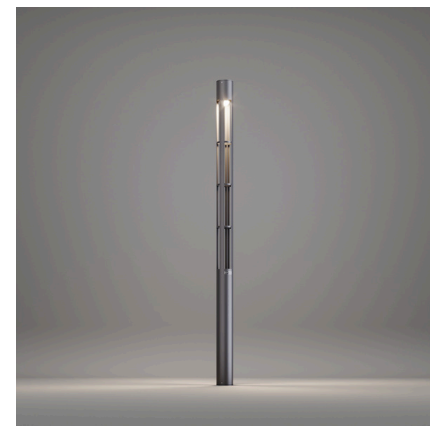
Colour temperature options	3000K / 4000K / 6500K
Luminaire luminous flux	2750 lm
Colour rendering index	80
Adjustability	fixed
Light distribution	-
Bug rating	0-1-1
CEN Flux Code	35-66-93-100-100

Safety

Protection class	IP 65
Impact resistance	-
Max. ambient temperature	60°
CE	✓



● 2700 K (Warm)



● 3000 K (Warm)



● 4000 K (Neutral)

FONE LIGHT
TECHNOLOGIES