

AKA060-DR200



## Bollard

### General information

Colour	<b>Anthracite / Black</b>
Material	<b>Aluminium</b>
Glass type	<b>Safety Glass</b>
Width	<b>120 mm</b>
Height	<b>2000 mm</b>
Depth	<b>120 mm</b>
Weight	<b>7.7 kg</b>

### Electrical data

Type of lamp	<b>LED</b>
Connected wattage	<b>30 W</b>
Supply voltage	<b>220 - 240 V</b>
AC / DC	<b>Yes</b>
Mains frequency	<b>0 - 50 / 60 Hz</b>
Safety Class	<b>IP65</b>
Controllable	<b>On / Off</b>



## Lighting technology

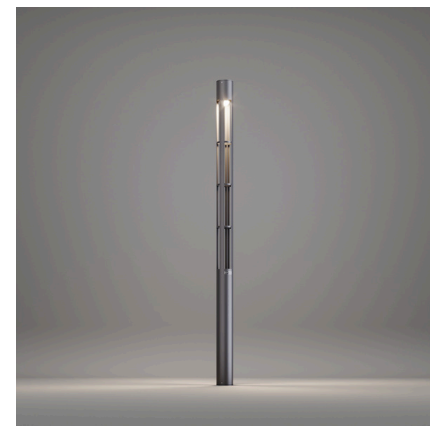
Colour temperature options	<b>3000K / 4000K / 6500K</b>
Luminaire luminous flux	<b>2140 lm</b>
Colour rendering index	<b>80</b>
Adjustability	<b>fixed</b>
Light distribution	-
Bug rating	<b>0-1-1</b>
CEN Flux Code	<b>35-66-93-100-100</b>

## Safety

Protection class	<b>IP 65</b>
Impact resistance	-
Max. ambient temperature	<b>60°</b>
CE	✓



● 3000 K (Warm)



● 4000 K (Neutral)



● 6500 K (Cool)