

AKA060-APK35

FONE | LIGHT
TECHNOLOGIES

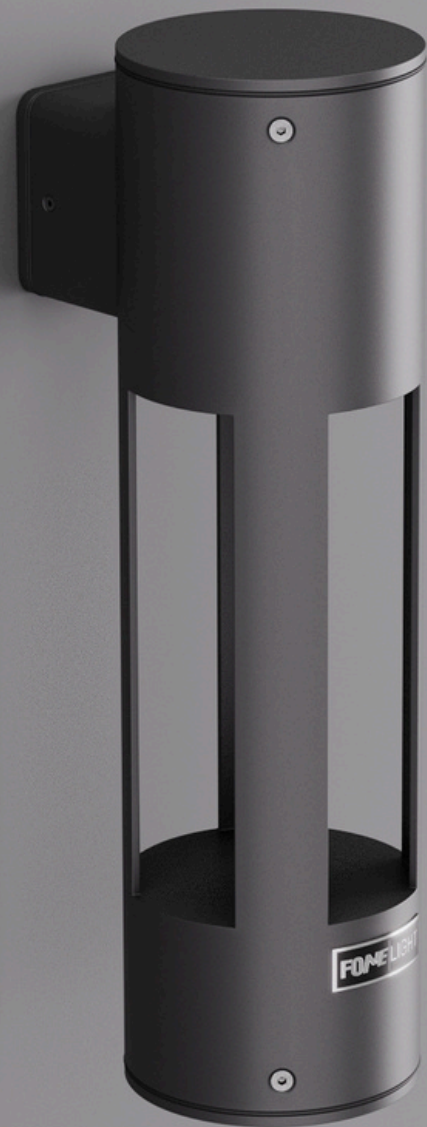
Wall Sconce

General information

Colour	Anthracite / Black
Material	Aluminium
Glass type	Safety Glass
Width	100 mm
Height	350 mm
Depth	100 mm
Weight	1.2 kg

General information

Type of lamp	LED
Connected wattage	7.0 W
Supply voltage	220 - 240 V
AC / DC	Yes
Mains frequency	0 - 50 / 60 Hz
Safety Class	IP65
Controllable	On / Off



FONE | LIGHT
TECHNOLOGIES

Lighting technology

Colour temperature options **3000K / 4000K / 6500K**

Luminaire luminous flux **260 lm**

Colour rendering index **80**

Adjustability **fixed**

Light distribution **-**

Bug rating **1-1-1**

CEN Flux Code **-**

Safety

Protection class **IP 65**

Impact resistance **-**

Max. ambient temperature **60°**

CE **✓**



● 3000 K (Warm)



● 4000 K (Neutral)



● 6500 K (Cool)



FONE | LIGHT
TECHNOLOGIES